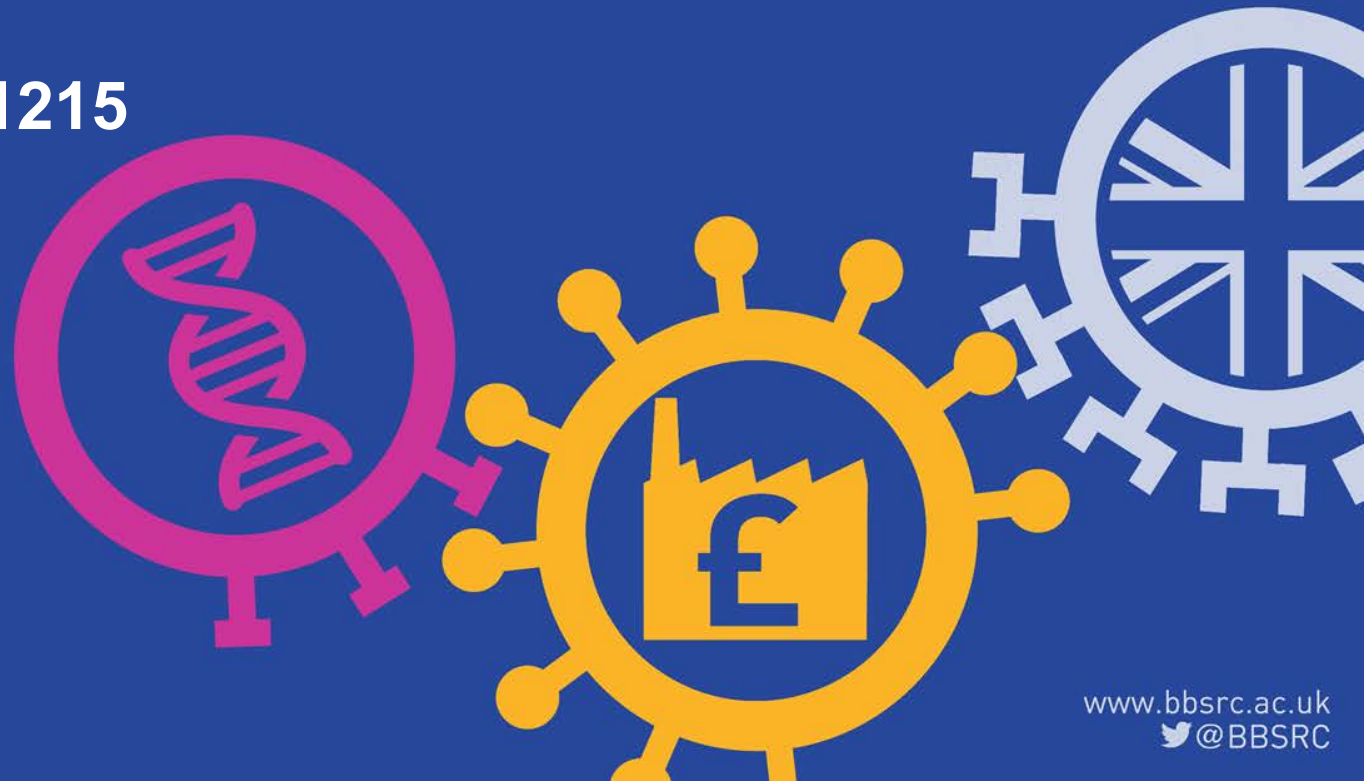




## sLoLa call webinar

15 May 2018

Start time: 1215



## Before we get started

- Please make sure your computer **speakers** are turned **ON**
- Please make sure your computer **microphone** is switched **OFF** to avoid audio feedback (check the microphone icon at the top of the Adobe Connect window - it should be coloured **grey** if **OFF**)
- If you have a technical issue, please chat to 'BBSRC host' in the chat window

# Questions

- Please ask questions in the 'Q & A' window throughout the webinar. We will respond in the final Q&A session
- Responses to questions that we are unable to answer during the webinar will be provided as soon as possible afterwards
- Please keep questions with more than one part within the same instant message; if sent as separate messages they will not appear together in the Q&A window
- Specific questions about the details of individual proposals should be e-mailed directly to [bbsrc.lolagrants@bbsrc.ac.uk](mailto:bbsrc.lolagrants@bbsrc.ac.uk)
- Questions about the Je-S system should be e-mailed directly to [JeShelp@rcuk.ac.uk](mailto:JeShelp@rcuk.ac.uk)

# Welcome and Introductions

- Jef Grainger, Jo O’Leary, Elly Tyacke, Richard Brown, Michal.Mazurkiewicz-Soldek
- Single point of contact  
[bbsrc.lolagrants@bbsrc.ac.uk](mailto:bbsrc.lolagrants@bbsrc.ac.uk)
- Slides will be made available online post-webinar

## Purpose of the webinar

- Provide an overview of the 2018 sLoLa call
- Share our rationale for changes
- Highlight key expectations
- Ensure applications are appropriately targeted



# Agenda

- Background
- Scope of the call
- Fit to the sLoLa scheme and eligibility
- Application and assessment process
- Q&A

# Forwards look for BBSRC/ bioscience...

- BBSRC now part of UKRI
- Ongoing work on BBSRC's forward strategy
- Importance of 'blue skies' frontier research within bioscience
- New opportunities for funding in ODA and Industrial context



Invitation to comment - strategy for UK biotechnology and biological sciences

BBSRC is inviting comment on the future strategy for UK biotechnology and biological sciences. An online questionnaire seeks input to shape our emerging thinking. The questionnaire is open to all, see: [Key Survey: Strategy for UK biotechnology and biological sciences](#) (read our [Terms of use: Key Survey](#)), it closes on 11 October 2017.

The UK research and innovation landscape has changed considerably in recent years, and it continues to evolve with the creation of UK Research and Innovation. As a key investor in bioscience, BBSRC is taking the opportunity to secure the strategic direction for UK biotechnology and

# Background to the call

- Relaunch and refocus following a pause
- Changes reflect
  - Outcomes of an interim review, including community feedback
  - Significant developments in wider UK funding landscape
  - Balanced approach to managing BBSRC's investment portfolio



## Some constants

- This will be a competitive call
  - Our budget is limited
- The process is designed to identify and prioritise the most promising proposals at each stage
  - Conduct peer review effectively and efficiently
  - Reviewer, committee member and BBSRC office resources
- We are looking for world leading research
  - Manage time and effort for applicants

# Frontier Bioscience

- Pioneering, innovative and creative research that can lead to far-reaching discoveries
- Central to BBSRC's mission to advance knowledge and technology
- Essential to ensuring the UK remains a global leader in bioscience

cutting-edge  
inventive radical  
far-reaching  
**frontier**  
blue-skies  
curiosity-driven  
discovery science  
original fundamental  
transformational  
**pioneering**  
paradigm-changing  
adventurous  
creative  
leading

## Some key indicators

- A significant fundamental bioscience question/ challenge
- Potential to deliver a step change in understanding
- Often inter/multidisciplinary
- Likely to require innovative approaches and methods, and advanced technologies
- Reach of the knowledge outputs- broad importance to bioscience beyond immediate field

# Strategic Approach

- The SLC will consider BBSRC's broader portfolio in making decisions
  - Overlaps with existing large investments
  - Proposals should be distinctive and outline how they fit within/enhance UK bioscience
- Proposals must be within our remit
- Proposals may have relevance to 'Responsive Mode' priorities but **MUST** be focused primarily on important fundamental science advancement

# What makes a sLola a sLola?

- This is a common issue
- The sLoLa mechanism supports complex, integrated programs of research
- Must demonstrate that the work requires a single larger scale award to be carried out
  - Not a collection of projects that could be undertaken separately or through successive smaller awards
  - Clear synergy and interdependency between work packages
  - Complementarity of the research team and approaches being used
  - Full justification for all elements of the programme

# Impact can be varied

Important to fully address appropriate routes

Is about more than just IP, products and spin outs



## Eligibility

- Standard BBSRC criteria apply
- Less prescriptive compared to previous calls- requirement for a specific number of BBSRC grants removed
- BUT we still expect significant track record and ‘critical mass’ of the applicants
- Changes reflect feedback and also the desire to help address E&I issues
- We have also clarified how Early Career Researchers can be involved in sLola proposals

# Application process

## Call registration

- Deadline 22 June 2018
- Submit via keysurvey

## Outlines

- Deadline 12 July 2018
- Submit via JeS

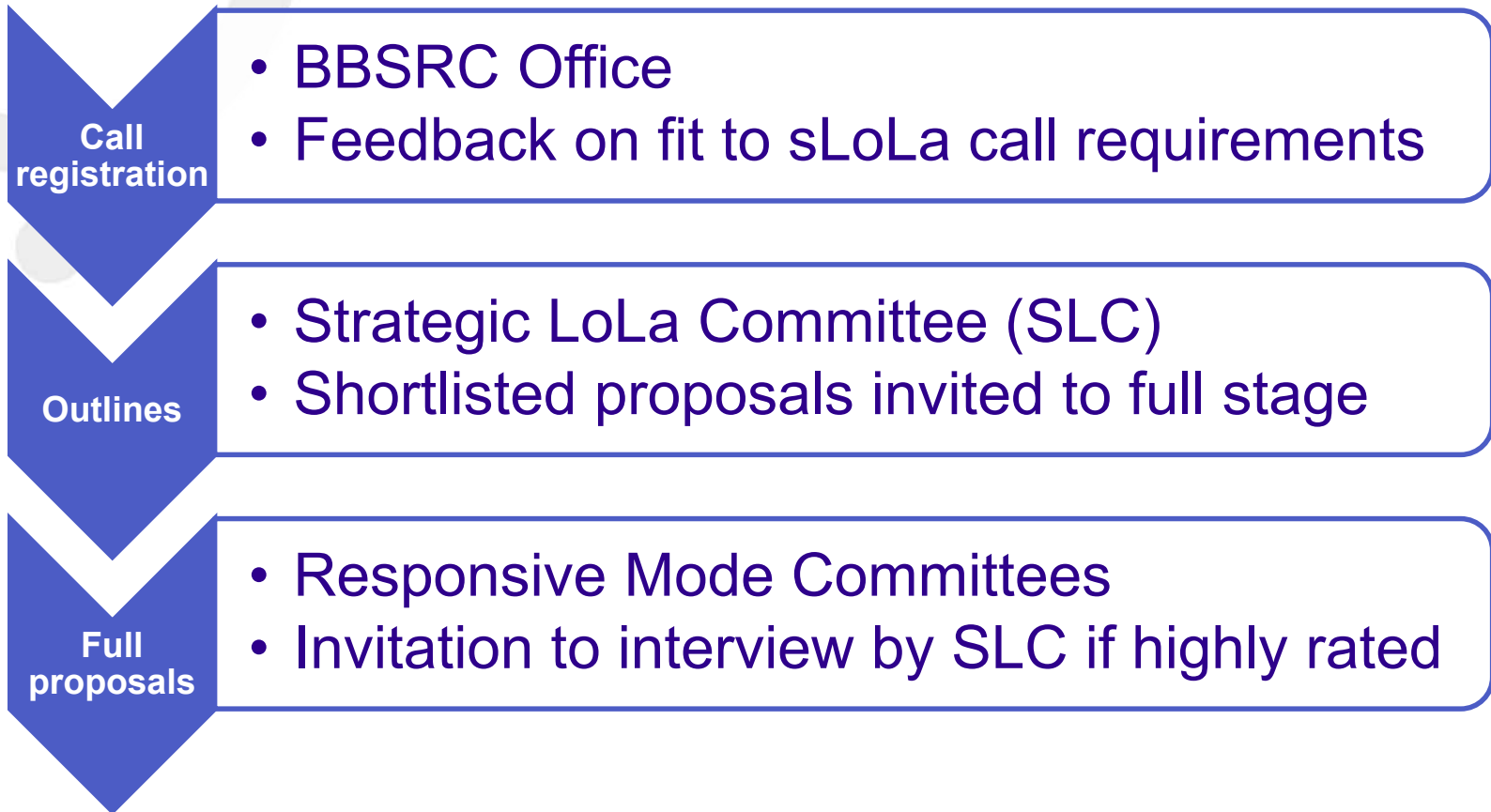
## Full proposals

- Deadline 16 January 2019, 4pm (TBC)
- Submit via JeS

Call registration is mandatory  
Full information is on the call webpage



# Assessment process



Details of what will be assessed at each stage are in the call guidance document

# Call registration

- We expect Research Organisations to prioritise submissions
  - Use the call guidance, ensure all proposals are appropriate
  - Be realistic- this is going to be a competitive call funding at most ~ 5 awards.
  - We do not recommend double digit submissions to the call registration, even from larger HEIs
  - We will not be able to give detailed feedback from the call registration or provide an indication of competitiveness of proposals
  - We aim to filter out proposals that are likely to be non-responsive to the call or otherwise ineligible
- If we are overwhelmed by demand, we will ask Research Organisations to further prioritise so it is better to do this early

## Assessment criteria

- Research excellence
- Importance and transformative potential
- Added value of funding via sLoLa grant
- Ability to deliver and leadership quality
- Management strategy
- Resources

## Other guidance

- Read the documents and formal eligibility requirements carefully
- Do not submit speculative/ premature proposals
- Address all aspects of the assessment criteria and fully address the call scope
- Ensure you communicate your proposal clearly, for both subject specialists and more general scientific audience
- Collaborative teams need to be able to demonstrate full synergy and ability to work together effectively
- If in doubt, please contact us for advice



## Q&A Session





*Thank you*

*We hope you found the webinar  
useful*

